


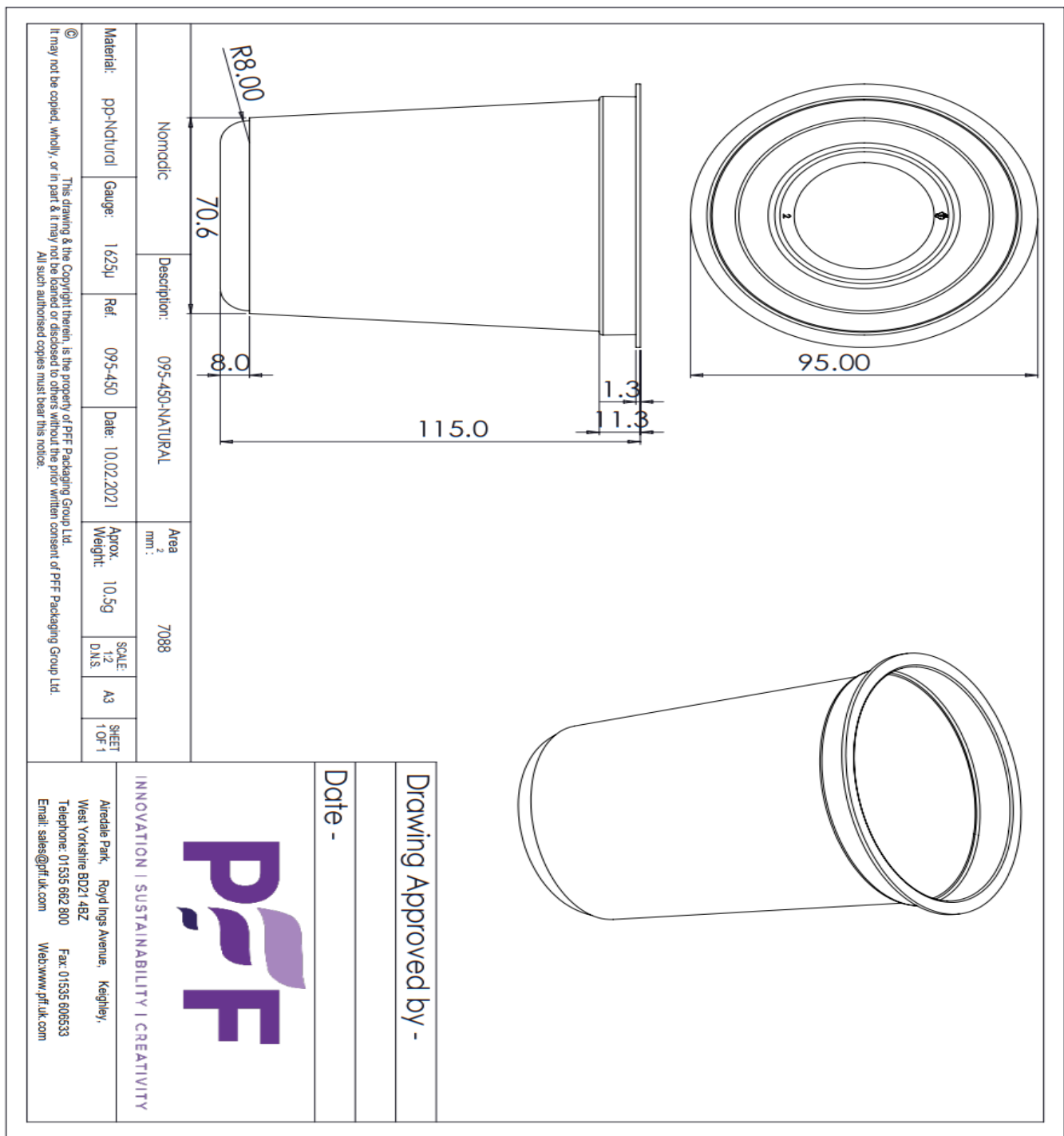


PRODUCT SPECIFICATION DATA SHEET							
Manufacturing Site: Washington							
1. General							
Client:	PFF		Product:	095 - 450g Pot Natural			
Customer Code/Ref.:	095 - 450g Pot Natural		PFF Ref.:	95-450-Nat			
De-Nest: Yes/No	Yes		Machine ID	G1/G2			
Tooling reference:	095-450		Issue Date:	9 Feb 2021	Issue No.	2	
Drawing Number:	095-450		Size (mm): (Rectangular)	Length	Width	Depth	
Colour/Ref.:	Natural			N/A	N/A	N/A	
Material Type/Blend: (tate whether PP / PET / PET-PE)	PP Blend P16		Size (mm): (Round)	Diameter		Depth	
				95		115	
Master Batch Code:	N/A		% Recyclable	100%*	* Check local recycle infrastructure		
2. Tolerances			Net Weight Tolerance = (±):	10%	Material Tolerance Gauge = (±):	5%	
Target weight (g): ref Tolerances	10.5	Calculated Target Weight Using Radius (mm):	N/A	Lower Weight:	9.5	Lower Gauge:	1544
Based on Raw Material Gauge (µm): ref Tolerances	1625			Upper Weight:	11.6	Upper Gauge:	1706
Cut size:	95		Product size Tolerance = (±): 1%				
3. Technical Data				RPET	APET	PP	
Suitability = Usage type **Subject to clear instruction from customer as per end use requirement.	RPET	APET	PP	Barrier Oxygen cc/m ² /24h	20-40	20-40	1300-2000
	All types**	All types**	All types**	Barrier Water vapour cc/m ² /24h	11-16	11-16	6-8
Recyclability				Recycled content used	Up to 90%* recycled content (50% post consumer recycle & up to 40% post process recycle)	Up to 80% post process recycle	Minimum 35% post process recycle
Shelf Life	Long Term**	Note** Packaging Tests must always be carried out by the food manufacturer in order to determine exact shelf life and functionality.					
Density g/cm ³	1.33 (PET) 0.95 (PP)	Migration Tests (overall)	3% Acetic Acid/10 days at 40°C Refer to migration report	50% Ethanol/10 days at 40°C Refer to migration report	Olive oil/10 days at 40°C Refer to migration report		
4. Pre supply Integrity/QA Checks 1-8**							
1. Cut to be concentric and clean - no angel hairs.				2. No sharp notches on cut edge			
3. Material distribution to be as even as possible over walls and base.				4. Flange must be flat as trays are to be heat sealed			
5. Product must be de-nest with minimum separation required				6. Stack product horizontally in bag			
7. Bags/Packs/Boxes & Pallets must be labelled to agreed label specification				8. Colour must be as even as possible to match specification			
5. Compliance							
<p>- All polymer grades meet the requirements of the following Regulations and Directives: SI 2012 No. 2619 - The Materials and Articles in Contact with Food (England) Regulations 2012 and subsequent amendments; The Commission Regulation (EU) No 10/2011 on plastic materials and articles intended to come into contact with food, and subsequent amendments; Regulations (EC) 1935/2004, 2023/2006, 282/2008, 450/2009 and Directive No. 94/62/EC and subsequent amendments. A representative Declaration of Compliance is available upon request.</p>							
6. Packing specification							
Quantity/Carton/Pack:	860		Carton Ref: / Size/Ref of RnT bag:	232710/A			
Carton/Pack Per Pallet:	18		Pallet Restrictions:	None			
Special Carton Print:	None		Polybag Required: Liner No.:	Liner Blue Box 720x1250x1125x35MU			
Quantity Per Stack:	20 x 43		Quantity Per Pallet:	15,480			
Pallet Type:	Wood 1200 mm x 1000 mm		Pallet Pad:	None			
Average Pack Weight (kg):	9.1		Average Pallet Weight (kg):	188.5			
7. Label Information:							
Position of Label:	Top right hand corner of face of pack. Small end of carton.						
Information Required on Label:	Customer, Product reference, customer reference, packing date, quantity per pack & packer Initials, works order number.						
8. Other references (linked documentation)		** Declaration of Compliance DOC/3.4/01					
9. Limitations							

PET: Ambient Storage (Not to exceed 70°C), do not store in direct sunlight or near heat sources. Standard blend suitable for deep freeze applications down to -10°C. Freezer grade blend suitable for deep freeze applications to -18°C. PET/PE suitable for deep freeze applications to -30°C. PE acts as an impact layer.

PP: Ambient Storage (Not to exceed 70°C). PP is suitable for use up to 130°C and for deep freeze applications down to -40°C, dependent on the blend



Specification prepared by: **Kate Janiszewska** Date: **9 February 2021**

Specification accepted on behalf of: **PFF**

Signed: Date:

Note: In the absence of a customer signature, agreement is assumed, unless or until we have a written objection